

DJD FRC Pulling Tool

The double jar down full radial contact (DJD FRC) pulling tool is used for external fishing neck recovery.

The DJD FRC pulling tool enables repetitive downward jarring to latch the fish without an inherent risk of prematurely shearing the jar-down-to-release pin.

The tool shears the upper pin in the DJD adaptor if the fish cannot be recovered—allowing subsequent downward jarring to release the pulling tool.

APPLICATIONS

- High-cost well intervention
- Gas lift work

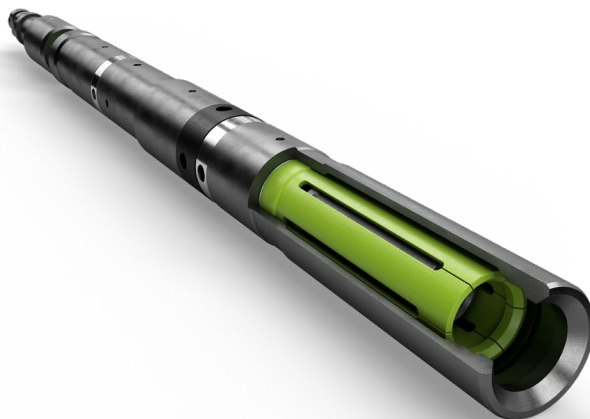
FEATURES AND BENEFITS

- Reduces toolbox inventory by eliminating separate JD, JU, and double JU FRC tools
- Enables robust jarring down and up without damage to the tool
- Simplifies redressing with quick exchange of shear pin, screws, pins, and springs
- Increases range of use with two shear pin size options
- Reduces NPT by eliminating premature shearing of the pin
- Increases versatility with specialized cores for gas lift work and all types of cable heads
- Saves time and effort with simple and smooth release of fingers from fish neck once sheared
- Handles larger-ID tubing with optional Bell Guide Bottom Subs
- Offers heavy duty pulling tool option: HD DJD FRC

TECHNICAL INFORMATION

Nominal Tubing Size, in	Length, in [mm]	Tool OD, in [mm]	To Engage Fish Neck, in [mm]
2 3/8	21.50 [546.1]	1.690 [42.9]	1.187 [30.2]
2 7/8	28.50 [723.9]	2.220 [56.4]	1.375 and 1.437 [34.9 and 36.5]
3 1/2	30.75 [781.1]	2.600 [66]	1.750 and 1.812 [44.4 and 46]
4 1/2	30.00 [762]	3.250 [82.6]	2.313 and 2.375 [58.8 and 60.3]
5 1/2	30.25 [768.4]	4.150 [105.4]	3.125 [79.4]

Note: Bell guide bottom sub option available to suit customer requirements.



Product Code: DJD FRC Pulling Tool / 234

info@peakwellsystems.com | peakwellsystems.com

© 2021 Peak Well Systems Pty Ltd. All rights reserved. Revision: 17 August 2021

